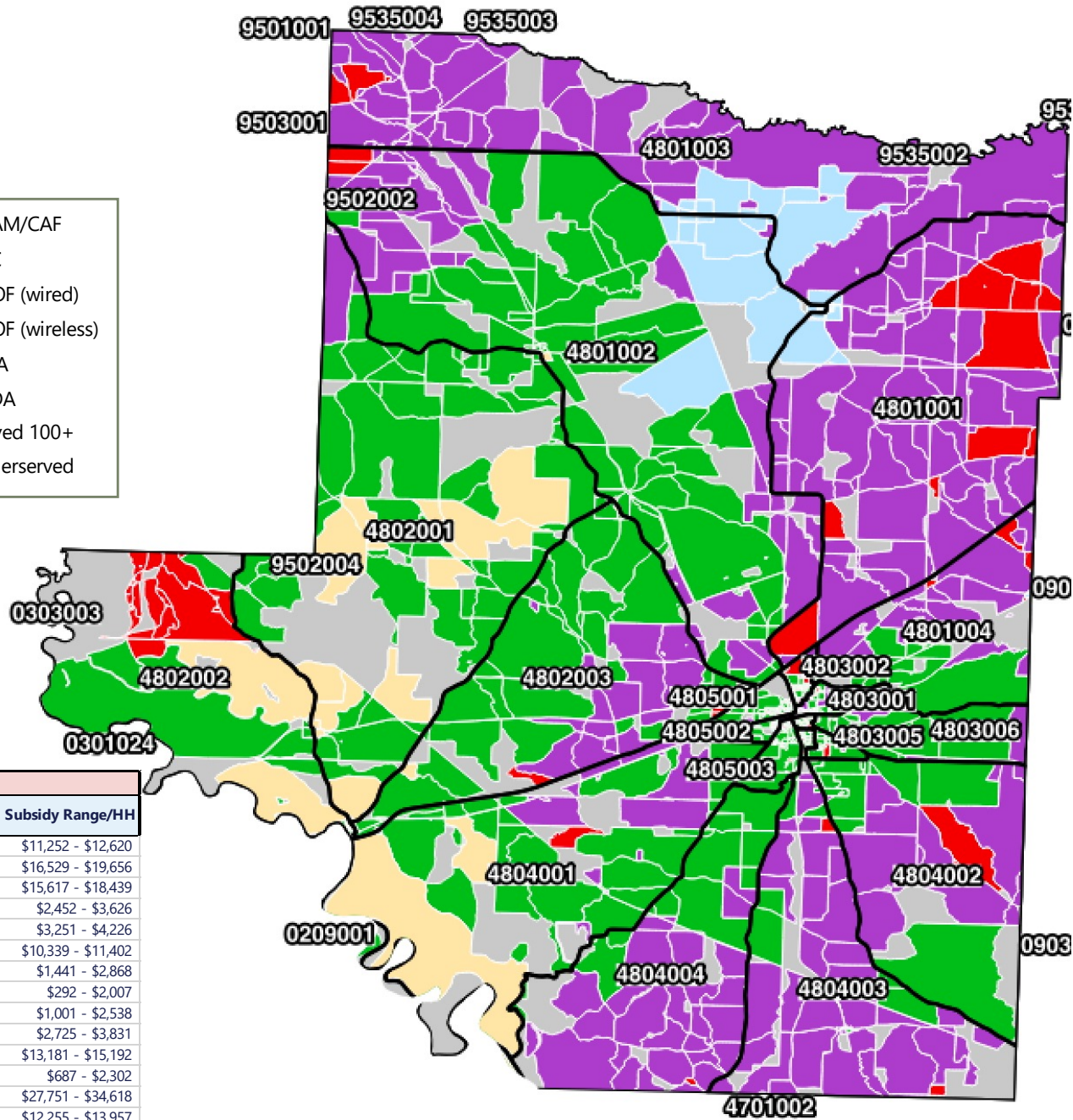
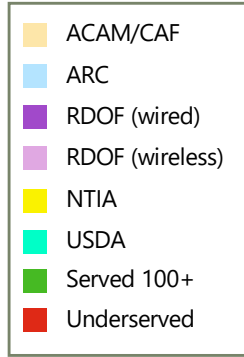


Hempstead County



CBG/Project Estimates to Fill the Broadband Gap with FTTH						
CBG	HHs	Fiber Miles	CapEx	CAPEX/HH	Subsidy Range	Subsidy Range/HH
050574801001	111	37.998	\$ 1,658,755	\$ 14,283	\$1,244,066 - \$1,395,274	\$11,252 - \$12,620
050574801002	45	23.163	\$ 994,191	\$ 21,319	\$745,643 - \$886,687	\$16,529 - \$19,656
050574801003	54	25.831	\$ 1,118,576	\$ 20,102	\$838,932 - \$990,553	\$15,617 - \$18,439
050574801004	17	0.974	\$ 81,420	\$ 4,114	\$41,288 - \$61,065	\$2,452 - \$3,626
050574802002	162	18.208	\$ 915,479	\$ 4,914	\$528,265 - \$686,609	\$3,251 - \$4,226
050574802003	4	0.569	\$ 52,934	\$ 13,064	\$39,701 - \$43,783	\$10,339 - \$11,402
050574803001	42	2.442	\$ 160,611	\$ 3,103	\$60,519 - \$120,458	\$1,441 - \$2,868
050574803002	92	3.437	\$ 244,821	\$ 1,955	\$26,763 - \$183,616	\$292 - \$2,007
050574803003	26	0.985	\$ 87,977	\$ 2,663	\$26,016 - \$65,983	\$1,001 - \$2,538
050574803004	18	1.262	\$ 91,951	\$ 4,388	\$49,054 - \$68,963	\$2,725 - \$3,831
050574803005	6	1.841	\$ 105,448	\$ 16,854	\$79,086 - \$91,149	\$13,181 - \$15,192
050574803006	33	1.209	\$ 101,308	\$ 2,349	\$22,664 - \$75,981	\$687 - \$2,302
050574804001	1	0.124	\$ 31,081	\$ 36,281	\$23,311 - \$29,079	\$27,751 - \$34,618
050574804002	21	7.397	\$ 343,153	\$ 15,620	\$257,365 - \$293,107	\$12,255 - \$13,957
050574804003	4	0.101	\$ 33,584	\$ 8,025	\$24,433 - \$25,188	\$6,363 - \$6,559
050574804004	2	0.249	\$ 36,662	\$ 21,102	\$27,497 - \$32,659	\$16,367 - \$19,440
050574805001	34	2.623	\$ 164,431	\$ 4,116	\$83,404 - \$123,323	\$2,453 - \$3,627
050574805002	17	0.393	\$ 56,730	\$ 2,680	\$16,979 - \$42,547	\$1,018 - \$2,551
050574805003	8	1.299	\$ 85,509	\$ 9,968	\$64,132 - \$66,444	\$8,016 - \$8,305
Total	695	130	\$ 6,364,623	\$ 9,157	\$4,708,120 - \$4,773,467	\$6,773 - \$6,867

Hempstead County: Hope

